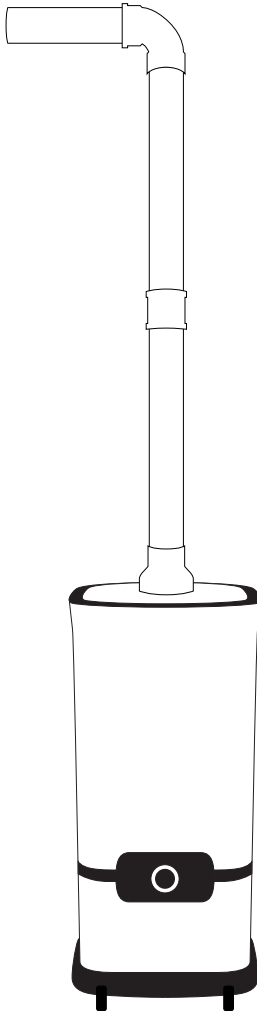


# MYCO-MISTER ULTRASONIC II

## User Manual



**MODEL: H-600**  
PLEASE READ THE INSTRUCTIONS TO  
ENSURE SAFE USE OF THIS HUMIDIFIER

## WARNINGS!

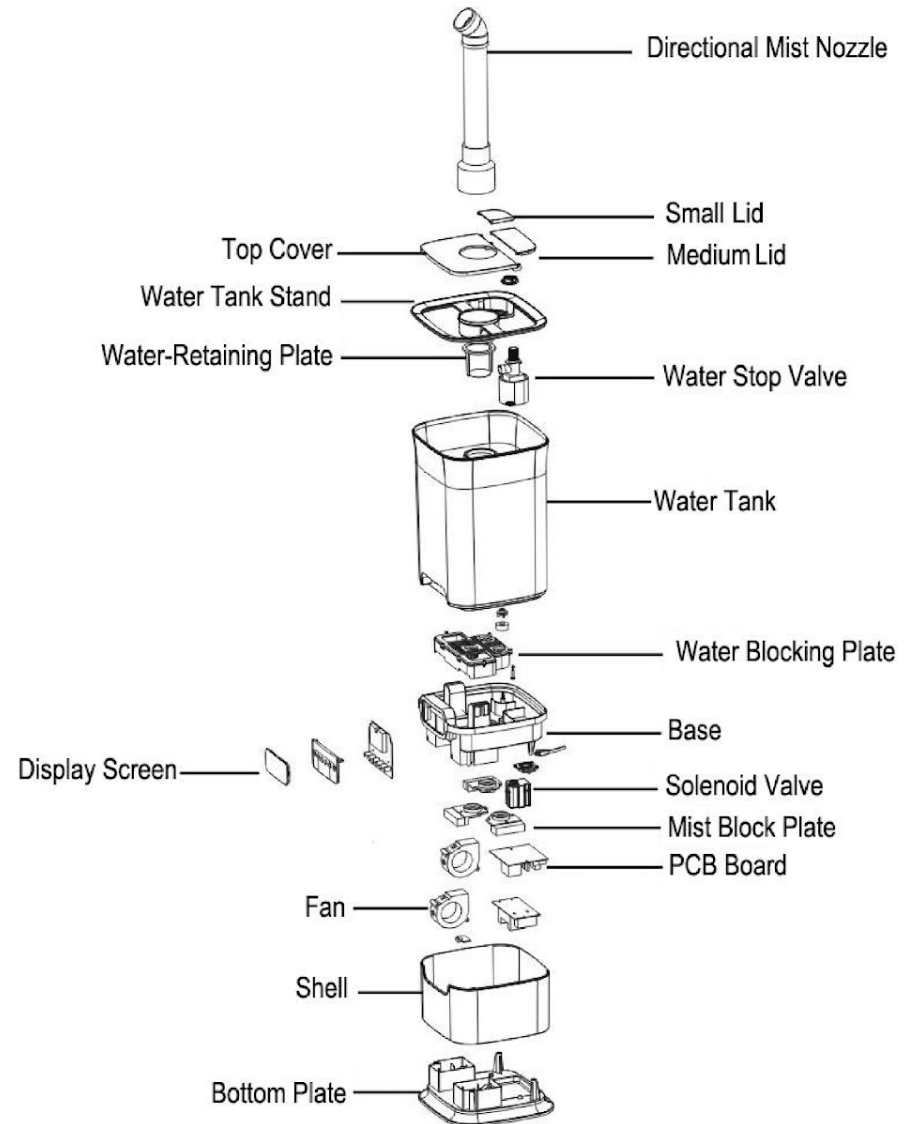
**SAFETY (Please read carefully before use, failure to follow the instructions may result in fire, electric shock and/or serious injury)**

1. This humidifier is intended only for indoor use.
2. Thoroughly inspect the unit in its entirety for any cracks, chips, or damage which could cause the unit to leak. DO NOT USE if any damage is found.
3. Only a professional or authorized technician should repair this appliance.
4. Do not use hot water in the humidifier.
5. Only use water in the humidifier.
6. Do not add any detergents, chemical agents or metals to the base or water tank. Do not add essential oils to the base or water tank.
7. Do not force the mist nozzle to a certain angle. To adjust the angle, rotate the piping.
8. Do not plug or unplug the unit from any type of power source with wet hands to avoid the risk of electric shock.
9. Connect only the electrical plug to a secure wall outlet.
10. Use only a 220V, 50Hz outlet.
11. Before cleaning, moving, or emptying the unit of water, turn off and disconnect the plug from its power source.
12. Unplug the humidifier when not in use.
13. Do not attempt to empty, fill, or tilt the humidifier while it is in operation.
14. This appliance is not intended for use by children.
15. Keep humidifier away from children and infants.
16. If the power cord is damaged, it must be replaced by the manufacturer or a qualified service engineer to avoid hazard and electrocution.
17. IMPORTANT: Using tap water with a high mineral content aka "hard water" with any humidifier can cause a fine white dust to be emitted. To avoid this, use distilled or demineralized water.

## OPERATING ENVIRONMENT

1. The mist direction should be aimed away from walls, electric appliances, and furniture as they may become damp or be left with a white powder like residue.
2. Place the humidifier on a firm, flat, dry and level surface.
3. Keep unit away from heat sources, i.e. heaters, furnaces, and avoid direct sunlight.
4. DO NOT use this appliance in any kind of flammable environment.
5. Keep unit in normal room temperatures. Do not operate the unit in freezing temperatures
6. Place the unit at least 6ft away from TVs, audio equipment and any other electronic appliances.
7. Do not place the unit near curtains.

## Parts Description:



The working area for this machine is 60-120sqm

1. Use only water in your humidifier
2. The water tank should be cleaned before use if it was not used for an extended period of time

### OPERATING INSTRUCTIONS

1. Ensure the unit is off and unplugged. Flip up the door on the top of the unit and add water ensuring the water level stays below the water tank stand and retaining plate. (Refer to Parts Description on previous page)



2. With the knob in the off position, plug unit into a wall socket. Turn on the on/off button or mist control button, the power indication light will light up green or blue when the power is on. When the humidifier is in use, the fog volume can be adjusted. Turn the knob to the right to start the machine and increase the fog volume, turn the knob to the left to reduce the fog volume and shut down the machine.
3. When the water level is low, the machine will automatically shut off and the water shortage indicator light will light up red. Turn off the unit, unplug the power, and then add water to the machine before resuming operation.

### MAINTENANCE

**WARNING: DO NOT** clean while the unit is switched on. Turn off the power and unplug the unit from its power source.

- DO NOT use cleaning detergents or chemicals to clean the tank or base. Detergent dissolved in the water supply can interfere with the mist output .
- If the water tank is extremely dirty, soak it with a mild bleach and water solution and rinse clean. DO NOT use detergent.
- Wipe the exterior of the body with a damp cloth.
- DO NOT spray water or any liquid onto the control.
- Never immerse the base in water or let water enter the air outlet or other openings.
- Clean and rinse the water tank and mist nozzle with lukewarm water frequently to avoid mineral buildup.
- Keep the nebulizer and water sensor free of mineral deposits. Remove the water tank and empty the reservoir. Clean the nebulizer and sensor with a soft brush such as an old toothbrush.
- DO NOT scrape the nebulizer or water sensor.
- DO NOT clean with tools that have metal parts.
- DO NOT leave water to sit in the tank for more than a couple of days as it may cause bacterial growth.
- Always empty the tank if not planning to use it for a few days

### STORAGE

- When not in use, store in a cool, dry location. To prevent dust and dirt use the packaging to repack the unit.
- Follow the maintenance instructions.
- If water is left in the unit during storage, it may harden and leave deposits that may affect the unit from operating properly.
- Leave the cap of the water tank loose. This will prevent the cap and gasket from sticking together and prolong the life of the gasket.

## TROUBLESHOOTING

### WARNING!

**DO NOT ATTEMPT TO REPAIR THE HUMIDIFIER YOURSELF**

PROBLEM	REASON	SOLUTION
Light off, fan not working, no mist.	Power not connected or issue with power source. Power is not switched on.	Try another power outlet. Rotate knob clockwise to power on.
Light on, fan not working, no mist.	Too much water is in the base.	Unplug unit, pour out the water and restart operating instructions.
Only a small amount of mist.	Atomizer is dirty.	Unplug unit and clean atomizer. Refer to maintenance.
Water cannot reach base.	Valve stuck or water tank positioned incorrectly on base.	Unplug unit, clean valve and reposition water tank onto base.
	Water level too high.	Unplug unit and pour out some water.

## GENERAL ADVICE

- Always use a hygrometer to check the humidity levels are correct. In cold weather, windows and walls may sometimes fog or develop excess condensation from too much humidity. If this occurs, reduce the mist intensity setting. Allowing too much moisture to accumulate could allow bacteria and mold to grow, and can also damage furniture, walls and wallpaper.
- To prolong the life of this humidifier, using distilled water is highly recommended.
- Do not add fragrance or oil in the water, it will cause the machine to malfunction and void the warranty.

## WARRANTY

This product is guaranteed under warranty and covers defects in material or workmanship from 1 year of date of purchase. The original bill of purchase (with purchase date) must be submitted. The warranty will not apply in cases of: Misuse: by non-compliance of the instructions, normal wear and tear, incorrect use, e.g. overloading, non-approved accessories, force or damage caused by external forces, if the plug has been tampered with or removed, partially or completely dismantled product, or interference by non-qualified persons.

PRODUCT: ULTRASONIC HUMIDIFIER  
MODEL NUMBER: H-600  
CAPACITY: 16L (4.2GAL)  
POWER SUPPLY: 100-240V 50/60Hz  
FAN POWER: 80W

